

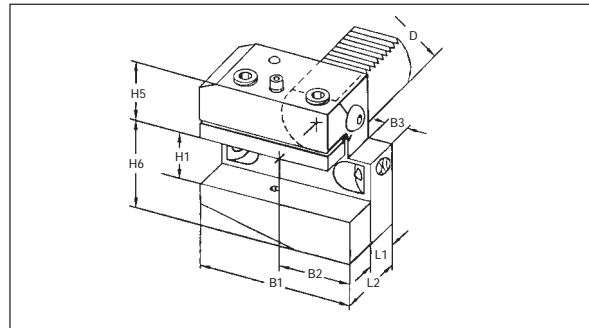
STANDARD RADIAL OVERHEAD TOOLHOLDERS

PER VDI 3425

DIN 69880

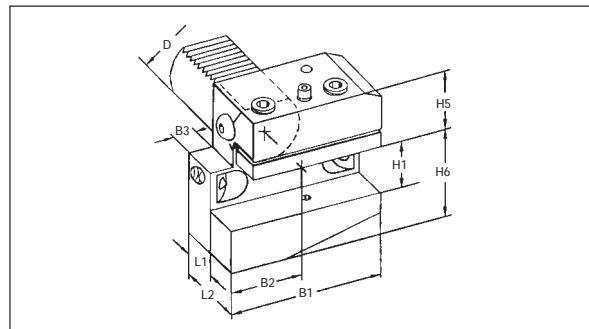
Form B1 RIGHT HAND SHORT

Part No.	D	B1	B2	B3	H1	H5	H6	L1	L2
433020	30	70	35	10	3/4"	28	38	22	40
434025	40	85	42.5	12.5	1"	32.5	48	22	44
435032	50	100	50	16	1-1/4"	35	60	30	55



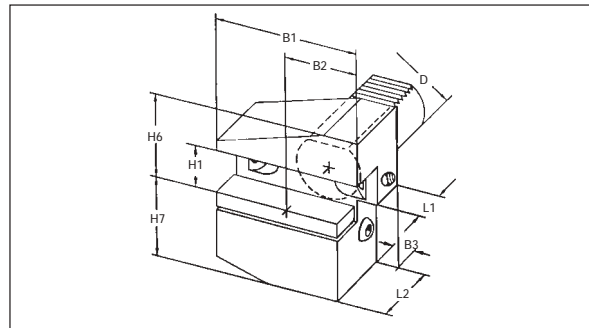
Form B2 LEFT HAND SHORT

Part No.	D	B1	B2	B3	H1	H5	H6	L1	L2
443020	30	70	35	10	3/4"	28	38	22	40
444025	40	85	42.5	12.5	1"	32.5	48	22	55
445032	50	100	50	16	1-1/4"	35	60	30	55



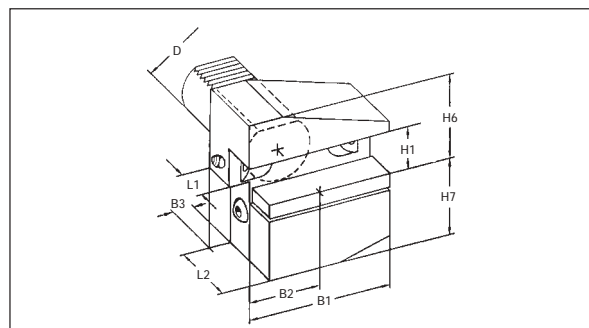
Form B3 RIGHT HAND SHORT REVERSE

Part No.	D	B1	B2	B3	H1	H6	H7	L1	L2
453020	30	70	35	10	3/4"	38	35	22	40
454025	40	85	42.5	12.5	1"	48	42.5	22	44
455032	50	100	50	16	1-1/4"	60	50	30	55



Form B4 LEFT HAND SHORT REVERSE

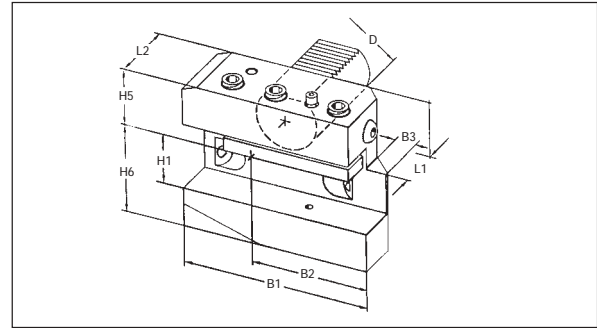
Part No.	D	B1	B2	B3	H1	H6	H7	L1	L2
463020	30	70	35	10	3/4"	38	35	42	40
464025	40	85	42.5	12.5	1"	48	42.5	22	44
465032	50	100	50	16	1-1/4"	60	50	30	55



LONG RADIAL OVERHEAD TOOLHOLDERS
 PER VDI 3425 DIN 69880

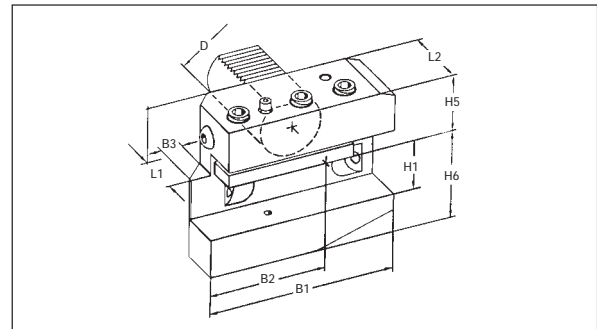
Form B5 RIGHT HAND LONG

Part No.	D	B1	B2	B3	H1	H5	H6	L1	L2
473020	30	100	65	10	3/4"	28	38	22	40
474025	40	118	75.5	12.5	1"	32.5	48	22	44
475032	50	130	80	16	1-1/4"	35	60	30	55



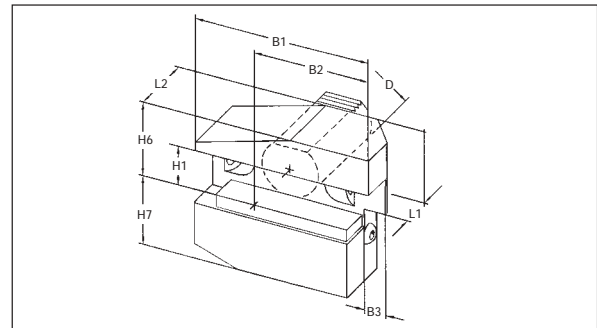
Form B6 LEFT HAND LONG

Part No.	D	B1	B2	B3	H1	H5	H6	L1	L2
483020	30	100	65	10	3/4"	28	38	22	40
484025	40	118	75.5	12.5	1"	32.5	48	22	44
485032	50	130	80	16	1-1/4"	35	60	30	55



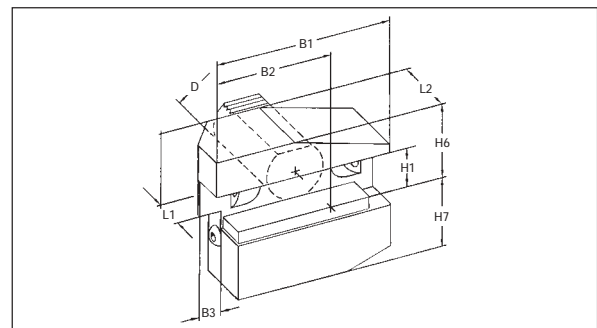
Form B7 RIGHT HAND LONG REVERSE

Part No.	D	B1	B2	B3	H1	H6	H7	L1	L2
493020	30	100	65	10	3/4"	38	35	22	40
494025	40	118	75.5	12.5	1"	48	42.5	22	44
495032	50	130	80	16	1-1/4"	60	50	30	55



Form B8 LEFT HAND LONG REVERSE

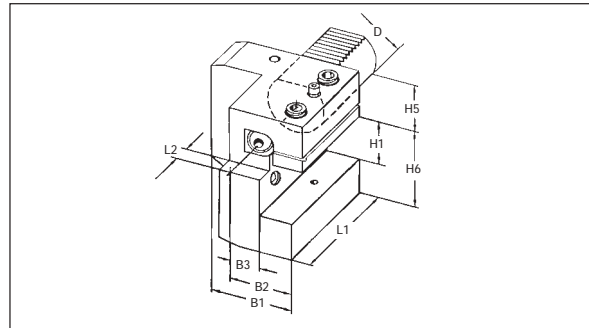
Part No.	D	B1	B2	B3	H1	H6	H7	L1	L2
503020	30	100	65	10	3/4"	38	35	22	40
504025	40	118	75.5	12.5	1"	48	42.5	22	44
505032	50	130	80	16	1-1/4"	60	50	30	55



AXIAL TOOLHOLDERS
PER VDI 3425 DIN 69880

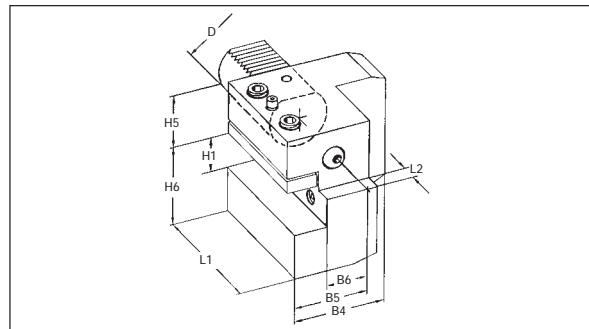
Form C1 RIGHT HAND

Part No.	D	B1	B2	B3	H1	H5	H6	L1	L2
513020	30	70	35	17	3/4"	28	38	70	10
514025	40	85	42.5	20.5	1"	32.5	48	85	12.5
515032	50	100	50	25.5	1-1/4"	35	60	100	16



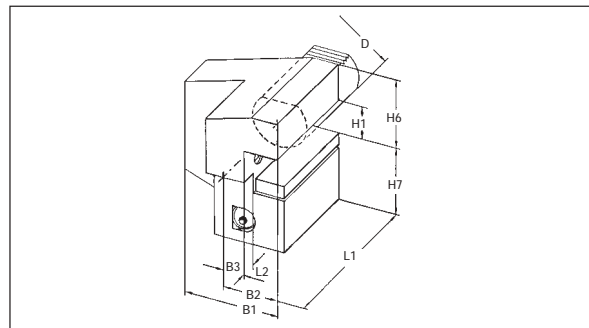
Form C2 LEFT HAND

Part No.	D	B4	B5	B6	H1	H5	H6	L1	L2
523020	30	76	41	23	3/4"	28	38	70	10
524025	40	90	47.5	25.5	1"	32.5	48	85	12.5
525032	50	105	55	30.5	1-1/4"	35	60	100	16



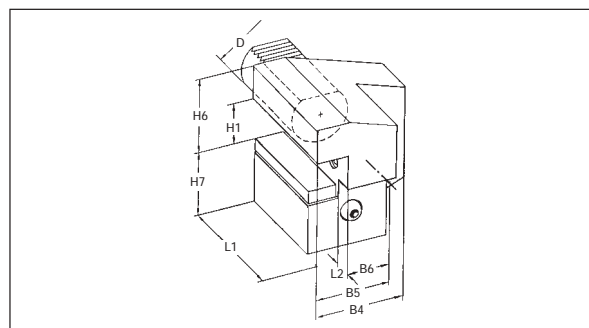
Form C3 RIGHT HAND REVERSE

Part No.	D	B1	B2	B3	H1	H6	H7	L1	L2
533020	30	70	35	17	3/4"	38	35	70	10
534025	40	85	42.5	20.5	1"	48	42.5	85	12.5
535032	50	100	50	25.5	1-1/4"	60	50	100	16



Form C4 LEFT HAND REVERSE

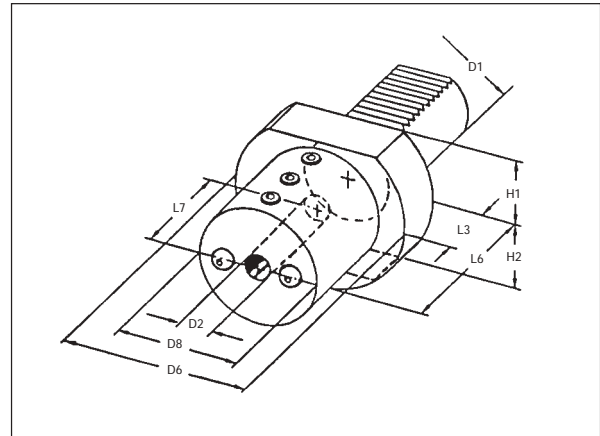
Part No.	D	B4	B5	B6	H1	H6	H7	L1	L2
543020	30	76	41	23	3/4"	38	35	70	10
544025	40	90	47.5	25.5	1"	48	42.5	85	12.5
545032	50	105	55	30.5	1-1/4"	60	50	100	16



BORING BAR HOLDERS
PER VDI 3425 DIN 69880

Form E2

Part No.	D1	D2	D6	D8	H1	H2	L3	L6	L7
553012	30	1/2"	68	55	28	30	22	60	51
553016	30	5/8"	68	55	28	30	22	60	51
553020	30	3/4"	68	55	28	30	22	60	51
553025	30	1"	68	55	28	30	22	60	51
553032	30	1-1/4"	68	55	28	30	22	75	61
554012	40	1/2"	83	55	32.5	—	22	75	61
554016	40	5/8"	83	55	32.5	—	22	75	61
554020	40	3/4"	83	55	32.5	—	22	75	61
554025	40	1"	83	55	32.5	—	22	75	61
554032	40	1-1/4"	83	83	32.5	—	22	75	61
555012	50	1/2"	98	68	35	—	30	90	76
555016	50	5/8"	98	68	35	—	30	90	76
555020	50	3/4"	98	68	35	—	30	90	76
555025	50	1"	98	68	35	—	30	90	76
555032	50	1-1/4"	98	68	35	—	30	90	76



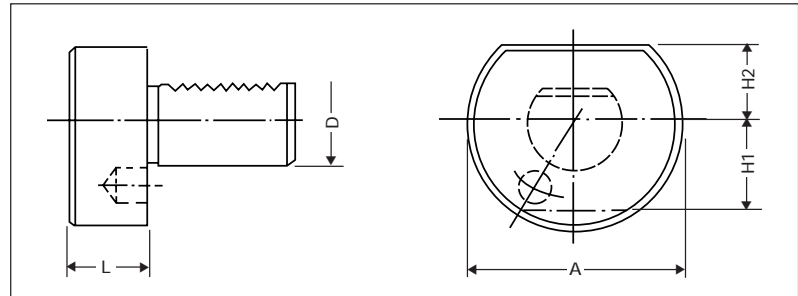
NOTE: Flat on lower side of 30mm shank tools.

STEEL PLUGS

PER VDI 3425 DIN 69880

Form Z2

Part No.	D	L	A	H1	H2
611640*	16	13	40	23	18
612050*	20	16	50	23	23
612558*	25	16	58	25	25
613068	30	16	68	30	28
614083	40	20	83	—	32.5
615098	50	20	98	—	35
616023*	60	20	123	—	42.5



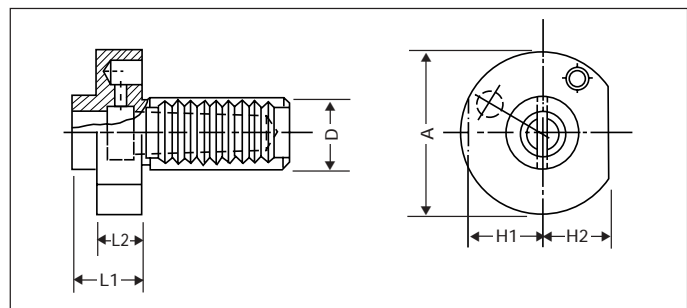
NOTE: Stock items available upon special request.

MORSE TAPER ADAPTERS

PER VDI 3425 DIN 69880

Form F For Shanks With Tang

Part No.	D	Tool Shank	L1	L2	A	H1	H2
623001	30	1	27	—	68	30	28
623002	30	2	27	—	68	30	28
623003	30	3	45	—	68	30	28
624001	40	1	36	22	83	32.5	—
624002	40	2	36	22	83	32.5	—
624003	40	3	36	22	83	32.5	—
624004	40	4	80	22	83	32.5	—
625002	50	2	36	30	98	35	—
625003	50	3	36	30	98	35	—
625004	50	4	50	30	98	35	—

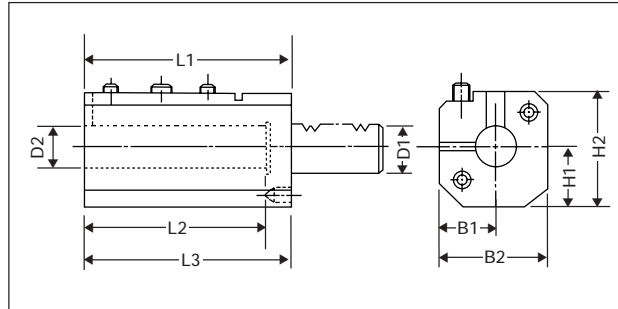


SPLIT CLAMPING BORING BAR HOLDER FOR REDUCED VIBRATION

PER VDI 3425 DIN 69880

Form EE2

Part No.	D1	D2	L1	L2	L3	H1	H2	B1	B2
563025	30	1"	60	70	80	30	58	35	65
563032	30	1-1/4"	60	70	80	30	58	35	65
564025	40	1"	60	70	80	40	72.5	42	79
564032	40	1-1/4"	60	70	80	40	72.5	42	79
564037	40	1-1/2"	60	70	80	40	72.5	42	79
565025	50	1"	65	75	90	48	83	50	95
565032	50	1-1/4"	65	75	90	48	83	50	95
565073	50	1-1/2"	65	75	90	48	83	50	95

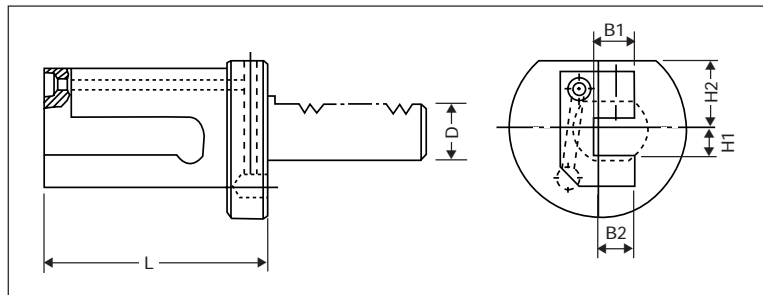


SPECIAL COMPACT AXIAL TOOLHOLDER

PER VDI 3425 DIN 69880

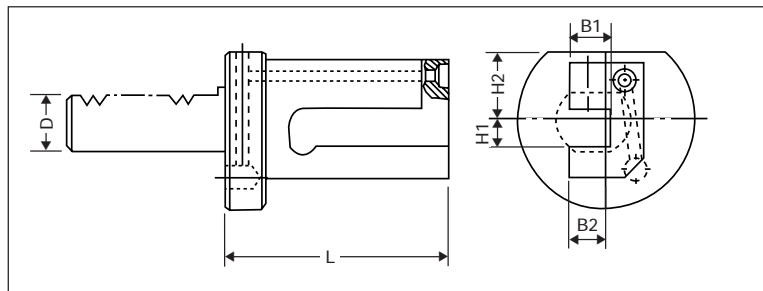
Form CC1 RIGHT HAND

Part No.	D	L	H1	H2	B1	B2
583032	30	85	16	28	16	16
584040	40	110	20	32.5	20	20
585050	50	120	25	35	25	25



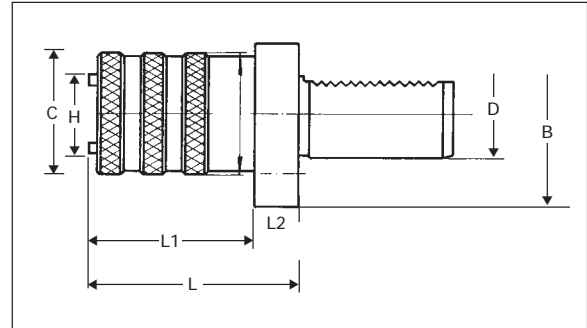
Form CC2 LEFT HAND

Part No.	D	L	H1	H2	B1	B2
593032	30	85	16	28	16	16
594040	40	110	20	32.5	20	20
595050	50	120	25	35	25	25



TENSION-COMPRESSION TAP HOLDERS
PER VDI 3425 DIN 69880

Part No.	D	Series	L	L1	L2	B	H	C	Tension	Compression
573014	30	CWE 1	70	40	30	68	28	36	7.62	7.62
574014	40	CWE 1	70	40	30	83	32.5	36	7.62	7.62
574022	40	CWE 2	93	63	30	83	32.5	55.5	12.45	12.45
575014	50	CWE 1	70	40	30	98	35	36	7.62	7.62
575022	50	CWE 2	93	63	30	98	35	55.5	12.45	12.45

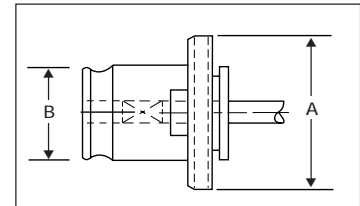


QUICK-CHANGE POSITIVE DRIVE TAP ADAPTERS

Hand Tap Size	Tap Shank Dia.	Part No. CWE 1	Depth Tap Enters	Part No. CWE 2	Depth Tap Enters
0-6	0.141	100006	0.85	200006	0.85
0-8	0.168	100008	0.92	200008	0.92
0-10	0.194	100010	0.92	200010	0.92
0-12	0.220	100012	0.95	200012	0.95
1/4	0.255	100125	0.95	200125	0.95
5/16	0.318	100312	0.98	200312	1.49
3/8	0.381	100375	1.05	200375	1.56
7/16	0.323	100437	1.08	200437	1.59
1/2	0.367	100500	1.11	200500	1.62
9/16	0.429	100562	1.17	200562	1.68
5/8	0.480			200625	1.74
11/16	0.542			200687	1.81
3/4	0.590			200750	1.87
13/16	0.652			200812	1.87
7/8	0.697			200875	1.93

TAP ADAPTER DIMENSIONS

	A	B
CWE 1	1.18	0.75
CWE 2	1.89	1.22



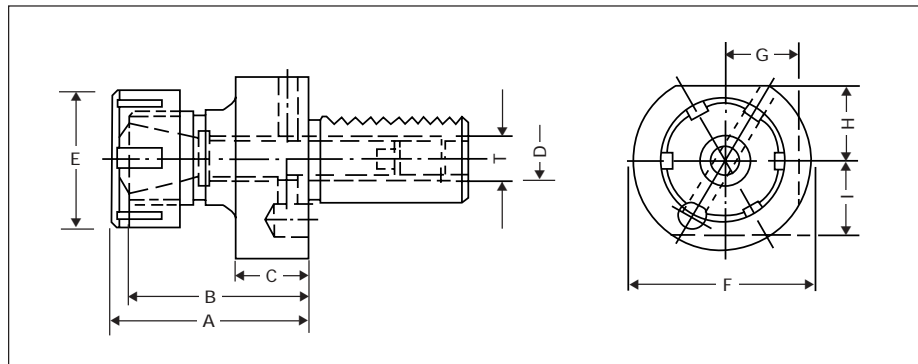
Pipe Tap Size	Tap Shank Dia.	Part No. CWE 1	Depth Tap Enters	Part No. CWE 2	Depth Tap Enters
1/8 - SS	0.313	105062	1.05	205062	1.49
1/8 - LS	0.437	105063	1.05	205063	1.05
1/4	0.562			205125	1.18
3/8	0.700			205375	1.24
1/2	0.687			205500	1.37

NOTE: Metric and Japanese standard sizes upon special request.

COLLET CHUCKS

PER VDI 3425

DIN 69880



RD/ER STYLE

Part No.	Description	D	A	B	C	E	F	G	H	I	T	Collet	Range	Wrench
411616*	16x40 RD 16	16	40	30	13	28	40	—	18	18	M 8x1	RD 16	0.5-10	GS 25
411620*	16x45 RD 16	16	45	33	13	34	40	—	18	18	M 8x1	RD 16	0.5-10	GS 25
412016*	20x40 RD 16	20	40	30	18	28	50	—	23	23	M 10x1	RD 16	0.5-10	GS 25
412025	20x50 RD 25	20	50	38	18	42	50	—	23	23	M 10x1	RD 25	1-16	E 25
412032	20x60 RD 32	20	60	48	18	50	50	—	23	23	M 10x1	RD 32	2-20	E 32
412040	20x66 RD 40	20	66	52	22	63	50	—	23	23	M 10x1	RD 40	3-26	E 40
412525*	25x50 RD 25	25	50	38	18	42	58	—	25	25	M 14x1.5	RD 25	1-16	E 25
412532*	30x60 RD 32	25	60	48	18	50	58	—	25	25	M 14x1.5	RD 32	2-20	E 32
413025	30x75 RD 25	30	75	63	22	50	68	30	28	30	M 18x1.5	RD 25	1-16	E 25
413032	30x75 RD 32	30	75	63	22	50	68	30	28	30	M 18x1.5	RD 32	2-20	E 32
413040	30x75 RD 40	30	75	61	22	63	68	30	28	30	M 18x1.5	RD 40	3-26	E 40
414025	40x75 RD 25	40	75	63	22	42	83	—	32.5		M 22x1.5	RD 25	1-16	E 25
414032	40x75 RD 32	40	75	63	22	50	83	—	32.5		M 22x1.5	RD 32	2-20	E 32
414040	40x75 RD 40	40	75	61	22	63	83	—	32.5		M 22x1.5	RD 40	3-26	E 40
415040*	50x75 RD 40	50	75	61	30	63	98	—	35		M 28x1.5	RD 40	3-26	E 40
416040*	60x75 RD 40	60	75	61	30	63	123	—	42.5		M 42x1.5	RD 40	3-26	E 40

RD/ORTLIEB STYLE

Part No.	Description	D	A	B	C	E	F	G	H	I	T	Collet	Range	Wrench
422025*	20x57 RDO 25	20	57	43	18	43	50	—	23	23	M 10x1	RDO 25	1.5-16	HSO 25
422525*	20x62 RDO 25	25	62	48	18	43	58	—	25	25	M 14x1.5	RDO 25	1.5-16	HSO 25
423025	30x57 RDO 25	30	57	43	22	43	68	30	28	30	M 18x1.5	RDO 25	1.5-16	HSO 25
423035	30x75 RDO 35	30	75	59	22	60	68	30	28	30	M 18x1.5	RDO 35	1.5-25	HSO 35
424025*	40x57 RDO 25	40	57	43	22	43	83	—	32.5		M 22x1.5	RDO 25	1.5-16	HSO 25
424035	40x75 RDO 35	40	75	59	22	60	83	—	32.5		M 22x1.5	RDO 35	1.5-25	HSO 35
424044	40x90 RDO 44	40	90	73	22	72	83	—	32.5		M 22x1.5	RDO 44	3.5-32	HSO 44
425035*	50x75 RDO 35	50	75	59	30	60	98	—	35		M 28x1.5	RDO 35	1.5-25	HSO 35
425044	50x90 RDO 44	50	90	73	30	72	98	—	35		M 28x1.5	RDO 44	3.5-32	HSO 44
426044*	60x90 RDO 44	60	90	73	30	72	123	—	42.5		M 42x1.5	RDO 44	3.5-32	HSO 44

RDG/TG STYLE

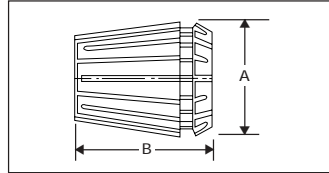
Part No.	Description	D	A	C	E	F	H	T	Range	Wrench
4040100	40x108 RDG 100	40	108	22	62	83	32.5	M 22x1.5	3/32-1	E 40

* Non-stock items available upon special request.

RD/ER STYLE

DIN 6499 B

	A		B	
	(mm.)	(in.)	(mm.)	(in.)
RD 16	17	0.669	27	1.063
RD 25	26	1.024	35	1.378
RD 32	33	1.299	40	1.575
RD 40	41	1.614	46	1.811



Metric Range	RD 16	RD 25	RD 32	RD 40
1-0.5	160-001			
2-1	160-002	250-001		
3-2	160-003	250-002	320-001	
4-3	160-004	250-003	320-002	400-001
5-4	160-005	250-004	320-003	400-002
6-5	160-006	250-005	320-004	400-003
7-6	160-007	250-006	320-005	400-004
8-7	160-008	250-007	320-006	400-005
9-8	160-009	250-008	320-007	400-006
10-9	160-010	250-009	320-008	400-007
11-10		250-010	320-009	400-008
12-11		250-011	320-010	400-009
13-12		250-012	320-011	400-010
14-13		250-013	320-012	400-011
15-14		250-014	320-013	400-012
16-15		250-015	320-014	400-013
17-16			320-015	400-014
18-17			320-016	400-015
19-18			320-017	400-016
20-19			320-018	400-017
21-20				400-018
22-21				400-019
23-22				400-020
24-23				400-021
25-24				400-022
26-25				400-023

Fractional Diameter	RD 16	RD 25	RD 32	RD 40
1-16	160-501	250-501		
3/32	160-502	250-502	320-501	
1/8	160-503	250-503	320-502	400-501
5/32	160-504	250-504	320-503	400-502
3/16	160-505	250-505	320-504	400-503
7/32	160-506	250-506	320-505	400-504
1/4	160-507	250-507	320-506	400-505
9/32	160-508	250-508	320-507	400-506
5/16	160-509	250-509	320-508	400-507
11/32	160-510	250-510	320-509	400-508
3/8	160-511	250-511	320-510	400-509
13/32	160-512	250-512	320-511	400-510
7/16		250-513	320-512	400-511
15/32		250-514	320-513	400-512
1/2		250-515	320-514	400-513
17/32		250-516	320-515	400-514
9/16		250-517	320-516	400-515
19/32		250-518	320-517	400-516
5/8		250-519	320-518	400-517
21/32			320-519	400-518
11/16			320-520	400-519
23/32			320-521	400-520
3/4			320-522	400-521
25/32				400-522
13/16				400-523
27/32				400-524
7/8				400-525
29/32				400-526
15/16				400-527
31/32				400-528
1				400-529

METRIC SETS

Part No.	No. Of Pcs.	Range
160-011	10	0.5-10
250-016	15	1-16
320-019	18	2-20
400-023	23	3-26

FRACTIONAL SETS

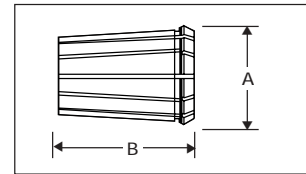
Part No.	No. Of Pcs.	Sizes
160-513	12	1/16-13/32
250-520	19	1/16-5/8
320-523	22	3/32-3/4
400-530	29	1/8-1

NOTE: Available sealed for coolant-through applications.
 RDT collets for tapping available in all series.
 Consult Centaur Precision Tools catalog for complete technical details.

COLLETS

RD/ORTLIEB STYLE DIN 6388 B

Series	Range	Increment	Set Part No.	No. Of Pcs.
RDO 25-Metric	1.5-16	0.5	4150030	29
RDO 25-Inch	1/8-5/8	1/16	4151010	9
RDO 35-Metric	1.5-25	0.5	4620048	47
RDO 35-Inch	1/8-1	1/16	4621016	15
RDO 44-Metric	3.5-32	0.5	4670058	57
RDO 44-Inch	1/8-1-1/4	1/16	4671020	19

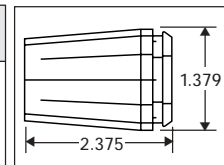


NOTE: Available sealed for coolant-through applications.
Consult Centaur Precision Tools catalog for complete technical details.

	A		B	
	mm.	in.	mm.	in.
RDO 25	25.5	1.00	40	1.57
RDO 35	35.3	1.39	52	2.05
RDO 44	44.0	1.73	60	2.36

RDG/TG-100 STYLE

Part No.	Fractional Inch	Decimal Inch	Part No.	Fractional Inch	Decimal Inch	Part No.	Fractional Inch	Decimal Inch
70001	3/32	0.093	70021	13/32	0.406	70041	23/32	0.718
70002	7/64	0.109	70022	27/64	0.421	70042	47/64	0.734
70003	1/8	0.125	70023	7/16	0.437	70043	3/4	0.750
70004	9/64	0.140	70024	29/64	0.453	70044	49/64	0.765
70005	5/32	0.156	70025	15/32	0.468	70045	25/32	0.781
70006	11/64	0.172	70026	31/64	0.484	70046	51/64	0.796
70007	3/16	0.188	70027	1/2	0.500	70047	13/16	0.812
70008	13/64	0.203	70028	33/64	0.515	70048	53/64	0.828
70009	7/32	0.218	70029	17/32	0.531	70049	27/32	0.843
70010	15/64	0.234	70030	35/64	0.546	70050	55/64	0.859
70011	1/4	0.250	70031	9/16	0.562	70051	7/8	0.875
70012	17/64	0.265	70032	37/64	0.578	70052	57/64	0.890
70013	9/32	0.281	70033	19/32	0.593	70053	29/32	0.906
70014	19/64	0.296	70034	39/64	0.609	70054	59/64	0.921
70015	5/16	0.312	70035	5/8	0.625	70055	15/16	0.937
70016	21/64	0.328	70036	41/64	0.640	70056	61/64	0.953
70017	11/32	0.343	70037	21/32	0.656	70057	31/32	0.968
70018	23/64	0.359	70038	43/64	0.671	70058	63/64	0.984
70019	3/8	0.375	70039	11/16	0.687	70059	1	1.000
70020	25/64	0.390	70040	45/64	0.703			



RDG 100 SETS

Part No.	No. Of Pcs.	Range (in.)	Increment
70060	59	3/32 - 1	1/64
70061	41	3/8 - 1	1/64
70062	30	3/32 - 1	1/32
70063	21	3/8 - 1	1/32
70064	15	1/8 - 1	1/16

NOTE: Available sealed for coolant-through applications.
Consult Centaur Precision Tools catalog for complete technical details.

WRENCHES

Part No.	Type	Collet
0022325	GS 25	RD 16
0022125	E 25	RD 25
0022132	E 32	RD 32
0022140	E 40	RD 40
0022225	HSO 25	RDO 25
0022235	HSO 35	RDO 35
0022244	HSO 44	RDO 44
0022140	E 40	RDG 100